



Schweitzer Salt

Swiss Mennonite Cultural and Historical Association

August 2014

Makeover planned for Mennonite Centennial Monument

On June 24, 1973 the Monument property title was transferred from Hopefield



to SMCHA. The monument stands on the site of the original Immigrant House. Representatives from Eden, Pretty Prairie, Zion and Bethany from Kingman, McPherson, First Mennonite of Christian, and Burns Churches (eleven committees) worked on the centennial event plans. Harley J. Stucky gave leadership. Jonas Flickner moved dirt in. Milo Goering supervised the building process. Stanley Regier was architect. Budget was \$18,500. Vernon Wedel used his stone mason talents. Virgil Schmidt planted

Sprucing Up the Landscape—Work is happening 2

Neva Belle Kaufman 3
Adamson's Prayer
Match Day—Give to Endowment Fund

Only Schweitzer 4
Spoken Here

German Prayers

Scholarship Awarded

SMCHA Mission:

- * Collect and disseminate information concerning the spiritual and cultural history of Anabaptists of Swiss origin.
- * Offer scholarships to qualifying college and seminary students.
- * Relate in a meaningful way the faith of our Mennonite forebears to present and future generations.
- * Maintain the Hopefield Cemetery and Swiss Mennonite 1943 Marker and Centennial Monument.

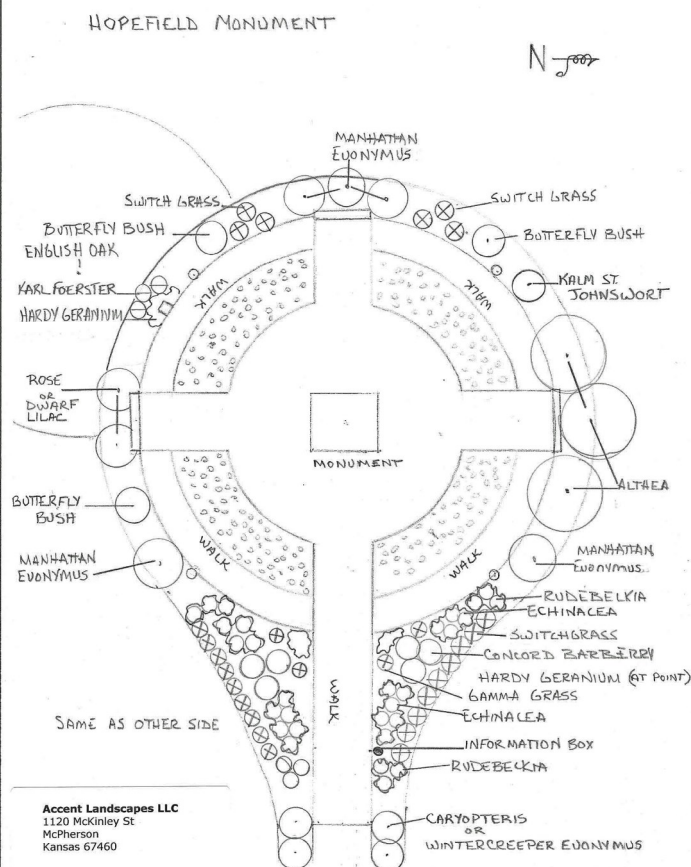
Schweitzer Salt Editor
Kathy Goering,
620-345-8532
Moundridge, Kansas
kjgo@mtelco.net

SEEKING CONTRIBUTORS

shrubs. Dedication occurred Sunday, September 1, 1974. Now those shrubs have been there about 40 years—time for an update.

Kim Nelson, from Accent Landscapes LLC, McPherson, has drawn a new plan to dress up this amazing historic site, one that people can appreciate as they read the story written on the seven plaques. At the dedication were stated these words:

"These stones, plaques and ribbons of stainless steel have been assembled as an expression of gratitude to THEE, Oh Lord. They symbolize a faith and an attempt by "one generation...to commend Thy works to another...They recite the story of Thy abounding goodness and sing of Thy righteousness with joy."



Now is the Time To Spruce up the Landscape

The Israelites were told to set up stones so that their children would notice them and ask why they are there. And then the story could be told about the faithfulness of God in bringing them out of bondage into a new freedom to live as God's people.

The Swiss Volhynian Mennonites left their homes because they understood Scripture to instruct them not to kill, to be pacifists; they came to America.

In 1973, leaders decided to celebrate the centennial of that immigration. Harley Stucky's book, The Swiss Mennonite Memorial Monument: Is it inspirational art, symbolic expression, or history?, tells of the building of the monument and the centennial event. Books are available. The Swiss Mennonite Cultural and Historical Association (SMCHA) was founded at that time for the purpose of keeping the Swiss Volhynian story alive and answering the question, "what do these stones mean?"

SMCHA owns the 1974 Memorial Monument, the 1943 Marker, and the Hopefield (Hoffnungsfeld) Cemetery near the original Hopefield Church (but not the Hopefield Church itself). The responsibility of maintaining these properties belongs to all who care to see that our children are able to hear of their heritage.

Since the Moundridge community is focusing now on ways to attract visitors, drawing attention to the Swiss Volhynian historic landmarks is a priority for the SMCHA Board. We want to renew the properties and get signs to direct visitors there. Last year the Board cut back the overgrown remaining 1974 bushes but decided our effort would need to be a makeover. Actually 40 years of growth seems long enough to deserve an overhaul. A plan was initiated to address the need. Costs include:



- Taking out the old bushes carefully to not harm the sidewalk, by Steve Isenberg and staff at Affordable Tree Service from Inman, Kansas.



- Repairing the uneven cement walkway
- Cleaning and polishing the plaques that explain the story
- Preparing the bed for a new landscape plan
- Providing water and a dripline to sustain prairie plants
- Planting new plants.
- Then we want to add signs identifying our sites and directing visitors there.

Two donors have given us a start by supporting the drilling of a water well near the Monument. What a great help to the survival of the beauty of that site. Trenching to the Monument and the cemetery will bring water for the new plants and trees planted there. Those who have been out in the Kansas wind and heat know how brutal weather can be and availability of water is essential.



Miller Drilling (Ezra and Adam) hit good water at 80' on Friday,



August 22 north of the Monument after drilling through lots of clay and rock. They drill wells nearly every day of the year. Now trenching will continue from the white pipe to the Monument and to the Cemetery.

Another gift has come as a memorial to a long-time SMCHA supporter and previous editor of *Schweitzer Salt*, Neva Belle Kaufman Adamson who died this year and is buried at Hopefield Cemetery. Knowing Neva's love of nature and her interest in the Schweitzer heritage, the contributions will be used for landscape plants and



cemetery sign. Sister Donna Neufeld states, “we feel a sense of excitement and assurance that the thread that our dad and mom, Menno and Alma Kaufman, helped weave with their work on the Monument Plaques continues through Neva’s contribution to your significant efforts—to keep the symbols of our roots alive for future generations.”

Neva Belle Kaufman Adamson’s Prayer

at the Swiss Mennonite Cultural and Historical Association meeting 2/4/2001- Hopefield Church.

Dear Heavenly Father, we are grateful for the simple abiding faith in You, in Your Son Jesus Christ, and in the Holy Spirit. For the faith to which our ancestors tenaciously clung And for the subsequent choices they made which directly affect us today.

We pray for continued strength and courage
For all who work to create a world of reason and understanding:

That the goal that lies within each heart here
May be magnified

That we will see more clearly,
Not that which divides us
But that which unites us

That each hour may bring us closer
To final victory
Not nation over nation
But of ourselves over our own evils and weaknesses.

We pray that the true spirit of Jesus Christ-Love, joy, beauty, hope, and the abiding faith (as with our ancestors) may be exemplified among us.

We seek the blessings of peace-
Peace to build and grow, to live in harmony and sympathy with others.

We seek God’s favor for our world
And pray for our leaders that You, God, will open their hearts and minds
To recognize truth and to follow direction from the Holy Spirit.

We thank You for the dedication of this generation as represented here.

We pray for wisdom to plan the future with confidence
So that You will be glorified and others may know of Your love.

Let not the complexities of today’s technologies and theologies
Stifle our precious simple faith.

In the name of Jesus Christ we pray.
Amen

Help the SMCHA Endowment Fund Grow

MATCH DAY—

Thursday, November 6, 2014

Building the SMCHA endowment is critical for our future. Match Day is a one-time opportunity to give since the Moundridge Community Foundation will match donations made to the SMCHA Endowment Fund—our long-term savings—and with your help, we could potentially receive \$3,000 more. Individual contributions from \$25 up will be matched at \$.50 per \$1.

On that one day, November 6, donations need to be physically taken to the Northridge Community Center in Moundridge between 7 a.m. and 6 p.m., made payable to Moundridge Community Foundation and directed to the SMCHA Endowment Fund.

For those who live away from Moundridge, payment may be mailed to Kathy Goering (1906 Carnation Vlg, Moundridge KS 67107) to be taken in that day or sent via credit card on this day to <http://www.mcphersonfoundation.org/donors/>. For more details, visit [mcphersonfoundation.org](http://www.mcphersonfoundation.org). More details will be coming.

SMCHA’s Endowment Goal—\$100,000

A new campaign to increase the Endowment is being initiated by the Board of Directors this year. The primary goal is to provide for the future maintenance of the SMCHA properties. Many of our members have parents and family buried at the Hopefield Cemetery and want to be assured that the site continues to receive care. Past Boards have desired to increase the Endowment Fund to take care of our responsibility.

The Match Day is a one-time chance to multiply the difference we make. Please consider how you can take advantage of this opportunity.

Of course designated contributions can be added to the SMCHA Endowment Fund (now over \$12,000) at any time by sending to P. O. Box 93, Moundridge KS 67107.

**Come west of Moundridge to see
the changes that are happening to
the SMCHA properties.**

Online at:
www.swissmennonite.org

SMCHA OFFICERS

LaVern Stucky, President
Ron Preheim, Vice President
Barbara Stucky, Secretary
Clemon Kaufman, Treasurer
Keith Albrecht, Exec Trustee
Jeanette Wedel, Stan Saner,
Richard Stucky, Kip Wedel,
A. Dale Schrag, Roy Kaufman
Nominating Committee:
James Juhnke, Leann Toews,
Ben J. Stucky
Research Committee:
Maynard and Marlene Krehbiel,
Wayne Goering, Vic Goering
Webmaster: Dennis Quiring
"Only Schweitzer Spoken Here"
Norvin Schrag, Ben Stucky,
Verlene Kaufman, Lorita Regier
Genealogy Advisor: Betty Graber
Hartzler

2014 Membership dues \$20/year
or \$100 for 6 years. Schweitzer
Salt is sent only to members.

SMCHA Banquet—Tuesday, November 11, 2014, at 6:00 at Water's Edge Restaurant in Hesston KS. Speaker Jeff Koller will share stories of Mennonite alternative service using his book of interviews, The Eden Peace Witness. Dinner cost \$20.

2014 SMCHA Scholarship is Awarded. The SMCHA Scholarship Committee is pleased to announce that the arship is Caley Ortman. Caley in 2012 and 2013 while taking Great Plains part-time. During he will be enrolled full time Seminary in Elkhart, Indiana. Dakota, and is the son of Stan ate of Bethel College in North as Youth Pastor at Faith Men-



2014 recipient of the \$500 Scholarship has received lesser scholarships ing ministerial classes at AMBS—ing the 2014-2015 school year, at Anabaptist Mennonite Biblical Caley is a native of Marion, South and Gwen Ortman. He is a graduate of Newton, Kansas, and has served nonite Church in Newton.

Only Schweitzer Spoken Here—Friday, September 19, at the Wellness Center at Pine Village at 2:00. Come enjoy speaking and hearing the language.

Saturday, October 18, 11:00 will be the Schweitzer presentation at Bethel College Fall Festival at North Newton.

Need a memorial gift? Consider purchasing a membership in SMCHA for someone who recently lost a loved one, to strengthen family memories.

Prayers like I heard my Father say

Komm, Herr Jesus, sei unser Gast und segne, was du uns bescheret hast. Amen.

Vater, segne diese Speise uns zur Kraft und dir zum Preise. Mach uns hier in dieser Zeit fertig für die Ewigkeit. Amen.

Vater, lass uns bei dem Essen, deiner Liebe nicht vergessen. Amen.

Alle guten Gaben, alles, was wir haben, kommt, o Gott, von dir. Dank sei dir dafür. Amen.

Du schenkst uns, Gott, so väterlich jetzt Speis und Trank: wir preisen dich. Denn alles, was uns stärkt und nährt, wird uns durch deine Huld gewährt. Amen.

Herr Gott, dir sei Lob und Dank, für Speis und Trank, und für alles Gute. Amen.

Wir wollen danken für unser Brot, wir wollen helfen in aller Not, wir wollen schaffen, die Kraft gibst du, wir wollen lieben: Herr hilf dazu. Amen.

*Speis uns, O Gott, deine Kinder:
Tröste die betrübten Sünder;
Sprich den Segen zu den Gaben,
Die wir jetzt und vor uns haben,
Kasze uns in diesem Leben
Stärke, Kraft und Nahrung geben,
Bis wir endlich mit den Frommen
Zu der himml'schen Mahlzeit kommen.
Amen.*

—Marlene Krehbiel